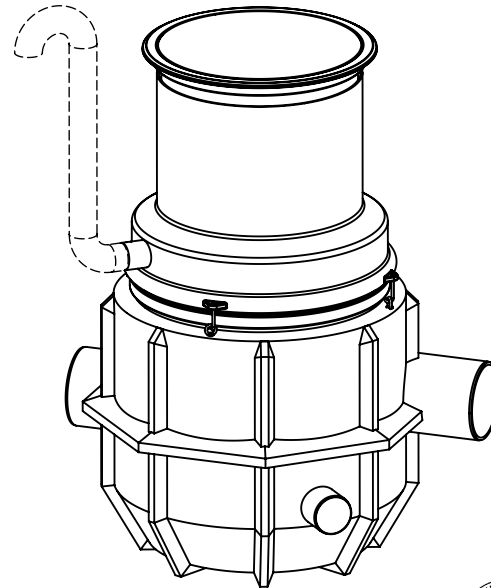
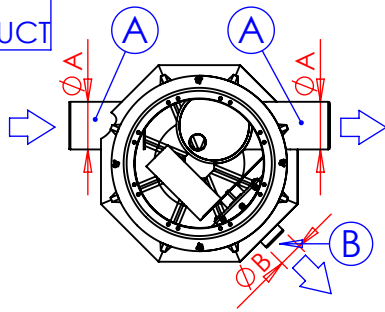
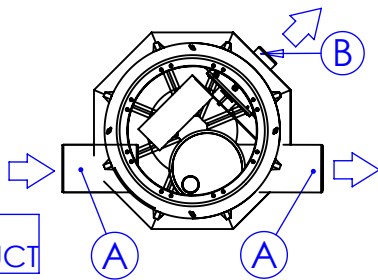


RIGHT HAND SIDE
STANDARD PRODUCT



LEFT HAND SIDE
SPECIAL PRODUCT



1	LABKO FRW PE		10/100
	Nominal flow rate	l/s	10
	Max flow rate	l/s	100
A	Inlet and by pass pipe	Dy	315
B	Outlet pipe	Dy	160
C	Flow regulator	pcs	1
D	EuroHUK 800 maintenance shaft (as needed)	pcs	1
E	Cast iron cover D400 40tn [] (accessory)	pcs	1
F	Ventilation pipe D110	pcs	110
h_{min}	Min connection height	mm	1300
h_{max}	Max connection height	mm	2900

Selection of maintenance shaft EuroHUK 800 for FRW NS10/100				
EuroHUK 800 maintenance shaft model	9-13 []	13-17 []	17-21 []	21-25 []
Installation depth of the inlet sewer from ground surface	1300-1700	1700-2100	2100-2500	2500-2900

Right hand side standard product

Left hand side product, special order []

h = Separator connection height from ground (mm)

h = _____ mm

This drawing and the technical information included in the drawing are property of Wavin-Labko Ltd. Authorities' regulations must be known before providing the product. Products must be installed according to installation instructions.



Product: LABKO FRW NS10/100			Drawing type: Customer drawing	
Design by: TP/MaL	Approved by: JP 5.11.2008	Drawing no: 42AB13_e	Date: 4.11.2008	Scale (A4): 1:30
			Construction site:	
WAVIN-LABKO Ltd. Labkotie 1 FIN-36240 KANGASALA FINLAND puh. +358 020 1285 200 fax. +358 0201285 280				